

Harvest the Sunshine

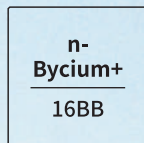
JA SOLAR

595W



JAM72D40 MB n-type Double Glass Bifacial Modules

Premium Cells



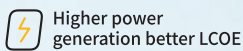
MBB Half-Cell Technology

26%



Cell Conversion Efficiency

Premium Modules



Higher power generation better LCOE



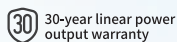
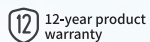
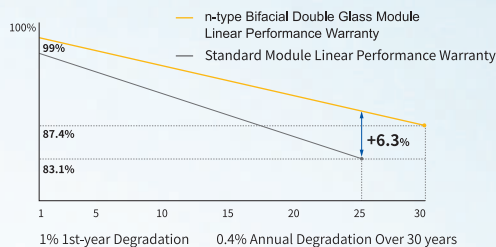
n-type with very Lower LID



Better Temperature Coefficient

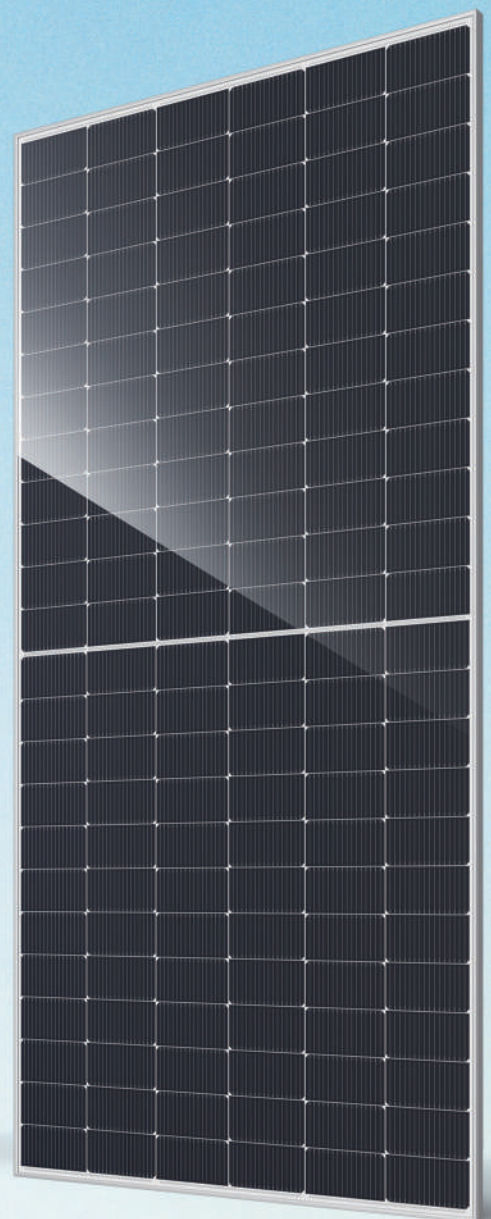
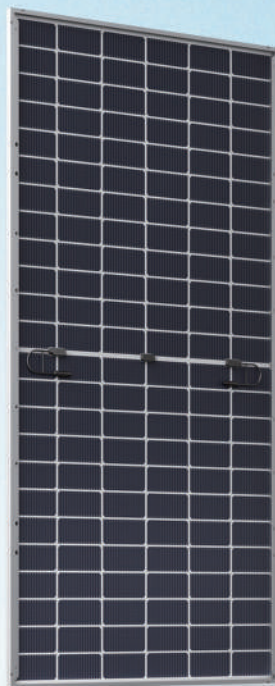


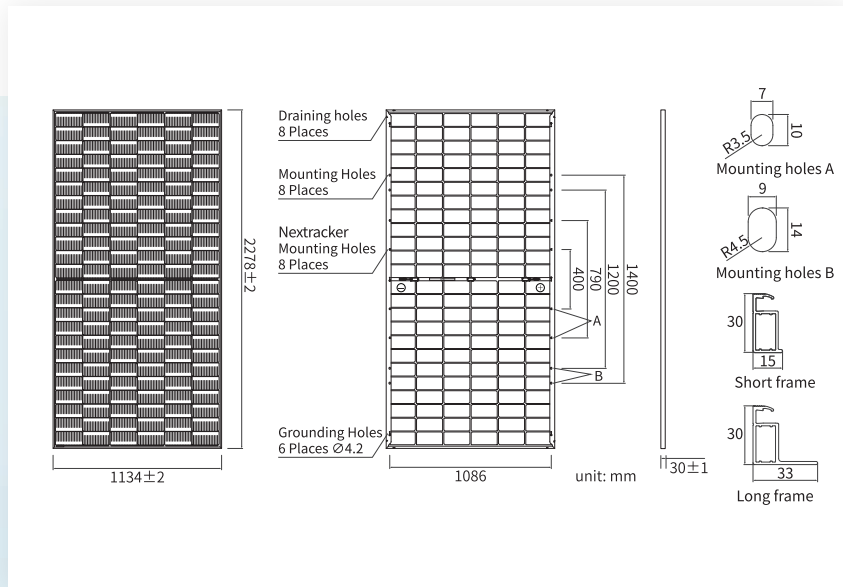
Better low irradiance response



Comprehensive Certificates

- IEC 61215, IEC 61730, UL 61215, UL 61730
- ISO 9001: 2015 Quality management systems
- ISO 14001: 2015 Environmental management systems
- ISO 45001: 2018 Occupational health and safety management systems
- IEC 62941: 2019 Terrestrial photovoltaic (PV) modules - Quality system for PV module manufacturing





MECHANICAL PARAMETERS

Cell	Mono
Weight	31.8kg
Dimensions	2278±2mm × 1134±2mm × 30±1mm
Cable Cross Section Size	4mm ² (IEC), 12 AWG(UL)
No. of cells	144(6×24)
Junction Box	IP68, 3diodes
Connector	QC 4.10-351/ MC4-EVO2A
Cable Length (Including Connector)	Portrait: 300mm(+)/400mm(-) Landscape: 1300mm(+)/1300mm(-)
Front Glass/Back Glass	2.0mm/2.0mm
Packaging Configuration	36pcs/Pallet, 720pcs/40HQ Container

Remark: customized frame color and cable length available upon request

ELECTRICAL PARAMETERS AT STC

TYPE	JAM72D40 570/MB	JAM72D40 575/MB	JAM72D40 580/MB	JAM72D40 585/MB	JAM72D40 590/MB	JAM72D40 595/MB
Rated Maximum Power(Pmax) [W]	570	575	580	585	590	595
Open Circuit Voltage (Voc) [V]	51.52	51.73	51.95	52.16	52.37	52.58
Maximum Power Voltage(Vmp) [V]	43.62	43.82	44.02	44.22	44.43	44.64
Short Circuit Current(Isc) [A]	13.74	13.79	13.84	13.89	13.94	13.99
Maximum Power Current(Imp) [A]	13.07	13.12	13.17	13.23	13.28	13.33
Module Efficiency [%]	21.1	22.3	22.5	22.6	22.8	23.0
Power Tolerance	0~+3%					
Temperature Coefficient of Isc(α _{Isc})	+0.046%/°C					
Temperature Coefficient of Voc (β _{Voc})	-0.260%/°C					
Temperature Coefficient of Pmax(γ _{Pmp})	-0.290%/°C					
STC	Irradiance 1000W/m ² , cell temperature 25°C, AM1.5G					

Remark: Electrical data in this catalog do not refer to a single module and they are not part of the offer. They only serve for comparison among different module types.

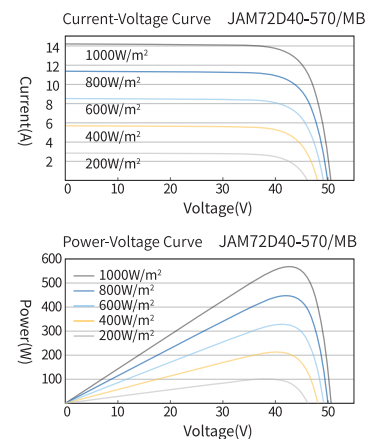
ELECTRICAL CHARACTERISTICS WITH 10% SOLAR IRRADIATION RATIO

TYPE	JAM72D40 570/MB	JAM72D40 575/MB	JAM72D40 580/MB	JAM72D40 585/MB	JAM72D40 590/MB	JAM72D40 595/MB
Rated Max Power(Pmax) [W]	616	621	626	632	637	643
Open Circuit Voltage(Voc) [V]	51.52	51.73	51.95	52.16	52.37	52.58
Max Power Voltage(Vmp) [V]	43.62	43.82	44.02	44.22	44.43	44.64
Short Circuit Current(Isc) [A]	14.84	14.89	14.95	15.00	15.06	15.11
Max Power Current(Imp) [A]	14.11	14.17	14.23	14.29	14.34	14.40
Irradiation Ratio (rear/front)	10%					

* For Nextacker installations, maximum static load please take compatibility approve letter between JA Solar and Nextacker for reference.

** Bifaciality=Pmax, rear/Rated Pmax, front

CHARACTERISTICS



OPERATING CONDITIONS

Maximum System Voltage	1500V DC
Operating Temperature	-40°C~+85°C
Maximum Series Fuse Rating	30A
Maximum Static Load, Front*	5400Pa(112 lb/ft ²)
Maximum Static Load, Back*	2400Pa(50 lb/ft ²)
NOCT	45±2°C
Bifaciality**	80%±10%
Fire Performance	UL Type 29